



# ARC FIRE SAFETY & CONTROLS LTD

Exploring Your Goals



Experts Of Design, Consultancy,  
Supply, Installation & Fabrication For  
Pump, Electro-mechanical System  
& Fire Safety Solution



A Reliable Quality Products &  
Service Provider Company



|📍 Jashimuddin Avenue, House #32, Road #01, Sector #03, Uttara, Dhaka-1230, Bangladesh  
|📞 +02-48957001 |✉ info@cesltd-bd.com, |📘 facebook.com/ARCFireSafety |🌐 www.cesltd-bd.com

## ABOUT US

**ARC Fire safety & Controls Limited** is one of the growing Fire Hydrant & Sprinkler System, Fire Detection System, Electro-Mechanical Machineries importer, all kind of Fire Equipment's, Industrial Domestic & Chemical Pump, CCTV & Access Control, Exhaust Fan, Lightning Protection system, Accessories Sales & Complete solution provider engineering company in Bangladesh to various fields like Garments, Textile, Pharmaceutical, Commercial Building, Engineering disposable items & tradings by our vast experience Engineering & Technical with high quality advance technological products, desing, drawing as per NFPA, Hydrolic Calculation by approved software & our best service with our strong engineering team. The motive of our teamwork is dedication and professionalism and above all total client satisfaction. Our goal is to make our society convenient and continues development for better service through our product, service and solutions.

**ARC Fire Safety & Controls Limited** promotes safety and security to protect life and property across major industrial namely residential and commercial facilities, Textile & Garments, oil and gas refineries, Airports and Aviation, Health care and Education, Military and police, Hospital all Important place required.

## BRANDS

**SIEMENS**

**NOTIFIER**  
by Honeywell

**HOCHIKI**

**ARMSTRONG**

**NAFFCO**  
PASSION TO PROTECT

**BOSCH**

**SFFECO**  
GLOBAL

**Rapldrop**

**KILLFIRE**

**VIKING**

**KOMPRESS**  
WE CREATE SPACE ON EARTH

**Kidde**

**tyco**  
Fire Protection Products

**Miacasa**

**SRI**



## FIRE HYDRANT & SPRINKLER SYSTEM

Fire hydrant installation consists of a system of pipe work connected directly to the water supply main to provide water to each and every hydrant outlet and is intended to provide water for the firemen to fight a fire. The water is discharged into the fire engine form which it is then pumped and sprayed over fire. Where the water supply is not reliable or inadequate, hydrant pumps should be provided to pressurize the fire mains. Fire sprinkler systems are detect, control and suppress unwanted fires. The main goal for fire sprinklers is to dramatically reduce heat, flame, smoke, control fire growth, and provide additional time to safely exit a building.

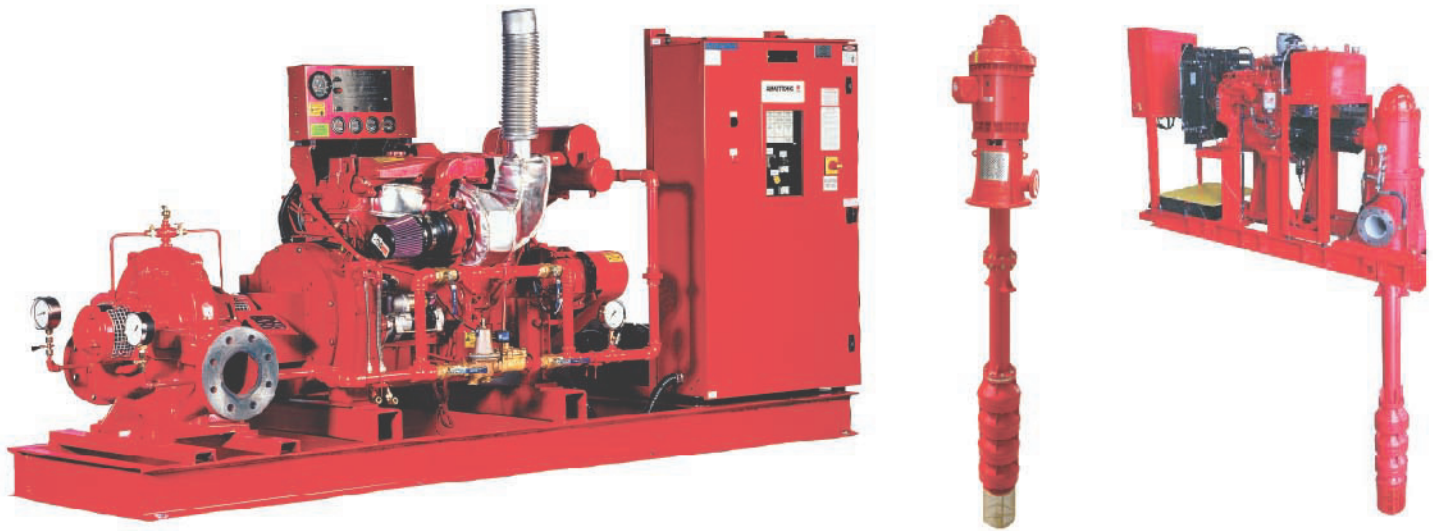


### Certification Authority





# FIRE HYDRANT & SPRINKLER SYSTEM



Certification Authority



ULC Standards



Underwriters Laboratories

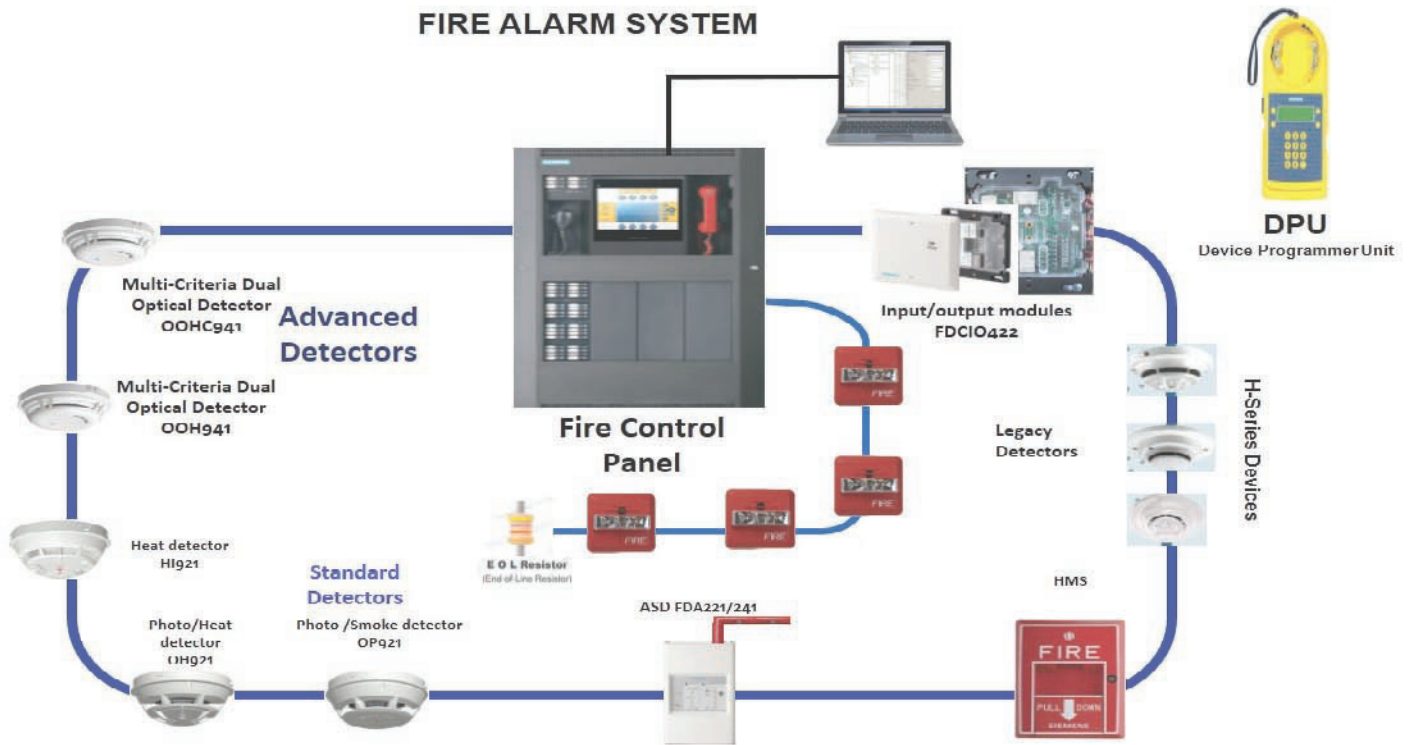


# FIRE DETECTION & ALARM SYSTEM

A fire alarm system has a number of devices working together to detect and warn people through visual and audio appliances when smoke, fire, carbon monoxide or other emergencies are present. Alarms can be either motorized bells or wall mountable sounders or horns. Beam smoke detectors use a projected beam of IR light to detect smoke across large areas and are often used to detect fires in buildings where point detectors would be either uneconomical or their use restricted by the height of the building.



## FIRE ALARM SYSTEM



### Certification Authority





# Building Management Systems

**SIEMENS**  
*Ingenuity for life*



The Building of Tomorrow

Digitalization means buildings are becoming more and more connected and the importance of having all building data in sight is constantly increasing. Whether you wish to enhance occupant comfort and productivity or to improve operational and energy efficiency, building management systems enable you to connect, monitor and operate your facility easily. From single discipline systems to fully integrated buildings, whether they are small or large, single- or multi-site, whether a school, office, hospital or airport, you will find the right solution in our offering of building management systems.

Smart Building Insights >

Smart Building Use Cases >

Intelligent Infrastructure >

Digital Services >

Digital Applications/lot >



**SIEMENS**



**HVAC products and  
building automation systems**



# GAS SUPPRESSION SYSTEM



## FOAM BLADDER TANK

FFECO Foam Bladder Tank Proportioning System is designed to inject foam concentrate into a suitable water supply and automatically proportion foam concentrate over a wide range of flows and pressures.

Material: Carbon Steel / Stainless Steel  
Finish: Red

**VERTICAL TYPE**  
Capacity: 25 - 1500 Gallons (95 - 5678 Litres)

**HORIZONTAL TYPE**  
Capacity: 100 - 3000 Gallons (379 - 11356 Litres)



## FIRE MONITORS

FFECO Fire monitors are designed to accommodate foam which has been injected in the upstream piping. SFFECO Fire monitors can be used in trucks and fixed fire protection systems to protect high hazards.

AVAILABLE MODEL TYPES:  
Fixed, Portable and Remote-Controlled.  
AVAILABLE OPERATION TYPES:  
Single Wheel, Double Wheel, Lever and Electric



## PRESSURE PROPORTIONER

SFFECO Pressure Proportioner (Ratio Controller) is used to produce constant preset foam solution in pressure proportioner systems. It is available in various flow rates.



Test Pressure: 25 Bar  
Finishing: Red Epoxy Coated  
Connection Flange: ANSI B16.5 Class 150B  
Flow Rate Range: 270 LPM @ 14 Bar - 18500 LPM @ 14 Bar

## FOAM BRANCH PIPE



SPECIFICATION	SF-31-4N	SF-31-5N
Working Pressure	5 Bar	5 Bar
Discharge	200 LPM	200 LPM
Expansion Rate	50	15 (Down 50 Degree)
Effective Reaches	8 m	8 m (Down 20° Downward)
Foam Covers	10 m <sup>2</sup> /minute	20 m <sup>2</sup> /minute
Total Length	320 mm	750 mm
Inlet Size	1 1/2" NH female	1 1/2" NH female
Total Weight	4 kgs.	7.5 kgs.

## LOW EXPANSION FOAM BRANCHPIPES

SFFECO Low Expansion Branchpipes are air aspirating type made of aluminum tube and cast bronze. It is ideal for use with all foam types on deck gun or fixed monitor with foam pick up hook. Foam expansion rate up to 14.



## AIR FOAM CHAMBER

SFFECO Air Foam Chamber can be used for the protection of flammable liquid storage tanks. This method consists of one or more foam chambers installed on the shell of the tank just below the roof joint. A foam solution pipe extends from the proportioning source outside the site wall to the foam maker located upstream of the chamber. A deflector is located inside the tank shell to deflect the discharge against the shell that results in a relatively gentle foam application on the fuel surface.

Working Pressure: Min. 3 Bar / Max 7 Bar  
Finishing: Red Epoxy Paint  
Connection Flange: ANSI B16.5 Class 150B



## INLINE PROPORTIONER

SFFECO Inline Proportioner offers a simple, inexpensive method of proportioning when the water supply pressure is reasonably high. Each proportioner is designed for a set water discharge rate at a set water pressure. However, higher or lower inlet water pressures result in an increase or decrease in water flow with a change in proportioning.

Test Pressure: 25 Bar  
Finishing: Red Epoxy Coated OR Natural Finish  
Connection Flange: ANSI B16.5 Class 150B  
Flow Rate Range: 75 LPM @ 7 Bar - 2750 LPM @ 7 Bar



## FOAM GENERATOR

SFFECO Model SF 31-3M and SF 31-3F is a high expansion foam generator which is suitable for total flooding applications, (eg. Basements, mines, tunnels, cable ducts, warehouses). It is powered by water turbine and aerofol fan, all that is required for operation is a pressurized water supply and a high expansion foam concentrate. Ideally suited for rapid smoke extraction and positive pressure ventilation.

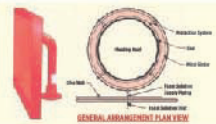


MOBILE TYPE: SF 31-3M  
FIXED TYPE: SF 31-3F

## RIM SEAL POURER

SFFECO Rim Seal Pourer is designed to deliver fully aspirated foam directly to the annular seal area of Open Top Floating Roof Storage tank for fire extinguishment. Fully aspirated foam provides the most effective performance for all types of foam concentrates.

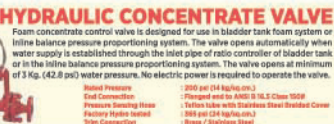
Finishing: Red Epoxy Coated  
Materials: Carbon Steel  
Capacity: Approx. 53 to 556 LPM



## HYDRAULIC CONCENTRATE VALVE

Foam concentrate control valve is designed for use in bladder tank foam system or inline balance pressure proportioning system. The valve opens automatically when water supply is established through the inlet pipe of ratio controller of bladder tank or in the inline balance pressure proportioning system. The valve opens at minimum of 3 kg. (42.8 psi) water pressure. No electric power is required to operate the valve.

Rated Pressure: 25 Bar  
Flow Control: 250 gal (24 kg/m<sup>3</sup>)  
Finishing: Red Epoxy Coated OR Natural Finish  
Connection Flange: ANSI B16.5 Class 150B  
Flow Rate Range: 75 LPM @ 7 Bar - 2750 LPM @ 7 Bar



## AIR FOAM NOZZLE

1 1/2" NH female swivel inlet base, with specially contoured pistol grip and ball valve.

200 LP @ 3.5 Bar and mixing 3% of AFFF (5% optional)

MODEL: SF-1795



## AIR FOAM WATER SPRINKLER

Fixed system employing sprinklers have great utility in fire protection of aircraft hangars, chemical process areas, petroleum loading racks, terminals, refineries and flammable liquid storage areas.

MODEL	S50	S20	S50
TYPE	Upright / Pendant		
FLOW RATE	86 LPM @ 4 Bar	35 LPM @ 34 Bar	80 LPM @ 3 Bar
MATERIAL	Cast Brass	Brass & Stainless steel	



## FOAM EDUCTOR

SFFECO Foam Eductor are available for all required headlines (1" - 2 1/2"). Our eductors are compatible with most foam concentrates. All SFFECO eductors are easy to hook up and set up. They can be deployed in any position as per requirement.

Material: Bronze / Stainless Steel / Aluminum Alloy  
Finishing: Red Paint  
Flow Rates: 50 LPM @ 7 Bar - 950 LPM @ 7 Bar



## FOAM CONCENTRATES

High expansion foam concentrates (3% - 5%)  
ALCOHOL TYPE FOAM CONCENTRATES (ATC)  
FLUIDRO PROTEIN FOAM CONCENTRATES  
Foam Concentrates for fires of CLASS A  
AQUEOUS FILM FORMING FOAM CONCENTRATES (3% - 6%) - UL Listed



## FOAM SYSTEM

SFFECO Foam System unit is constructed with a heavy duty tank with corrosion proof coating. Two external nitrogen cylinders are provided for pressurizing the tank.

One unit of skid mounted hose reel also available with 30Meter hose.

**FEATURES**  
Various selections of eductors, hoses or nozzles are available.  
Custom size design available with tank capacities and hose reels.  
Pressure Gauge is available to indicate the system pressure.



## FOAM MASTER

SFFECO Foam Master are ideal for rapid deployment of foam to flammable liquid fires and chemical spills. It can be operated by one person.

**COMPONENTS**  
Foam Tank: Carbon Steel.  
Stainless Steel also Available  
Foam Eductor: 2", 1% - 6% Adjustable Proportioning  
Foam Branch Pipe  
Fire Hose: 1 3/4" dia or 1 1/2" ISM (2 nos.)  
Foam Branch Pipe with Ball Valve  
Options: Special foam nozzles and branch pipes available as per request.

**MODELS:**  
150 ltr Capacity: FM150  
200 ltr Capacity: FM200



## FOAM STATION UNIT

The SFFECO Foam Station Unit is designed to meet the urgent requirement of Civil Defence authorities and Oil companies of having a dependable, forceful and very fast operating apparatus in fighting liquid combustible matters. In fighting Class B Fires, every second counts that's why SFFECO Foam Station Unit has been designed to be fully operational within seconds. SFFECO is the pioneer in the whole Middle East when it comes to Foam Station Units.

**FEATURES**  
• 1" or 1 1/2" water synthetic water and gas resistant rubber hose  
• Stainless steel (250) tank with large diameter filler cap  
• Stainless steel controllable Foam Branchpipe to use water gas  
• Foam Proportioner and the only Foam Indicator with Controllable Foam within 0-4%  
• Foam liquid indicator mechanical type to confirm the operator's foam amount  
• 2" Angle valve with cap for water connection NPT thread  
• 10 Meters hose from branchpipe for operator safety  
• Quick opening pressure 2" ball valve for shortening operation time  
• Pressure gauge to indicate system pressure  
• Ball handle with special steel pipe 3/8" dia (30mm) (2 nos available on request)  
• Stainless steel operating instructions and name plate



## Certification Authority



ULC Standards



Underwriters Laboratories





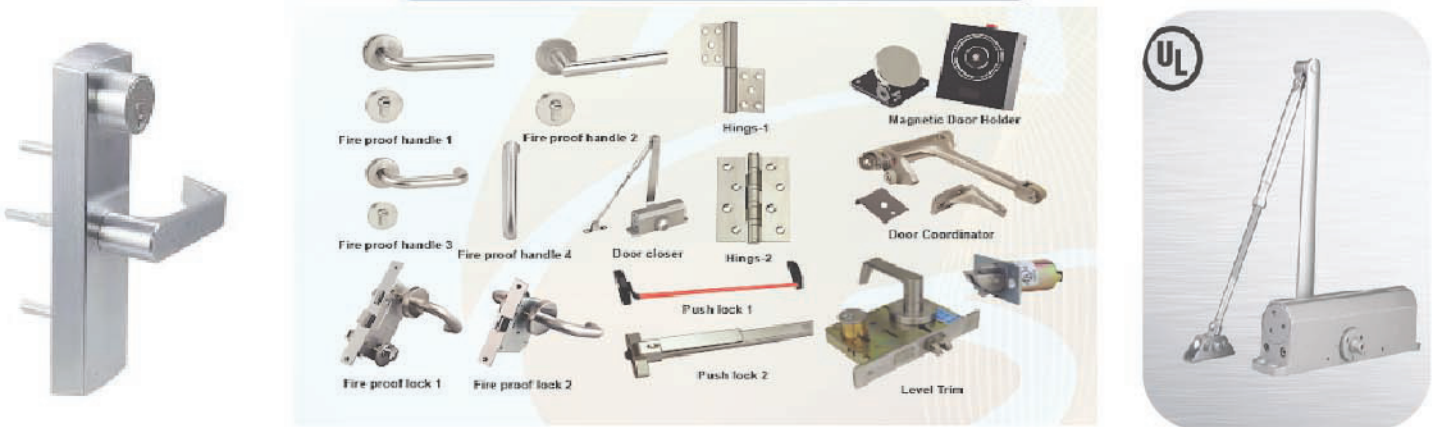
## FIRE RATED DOOR



## FIRE RATED GLAZED DOOR (2HR)



## FIRE RATED DOOR ACCESSORIES



Certification Authority



ULC Standards



Underwriters Laboratories





## INDUSTRIAL RACKING SYSTEMS

### Features

- Customised design for all applications
- High Space Utilisation
- Quick Storage and retrieval



Drive in Racking



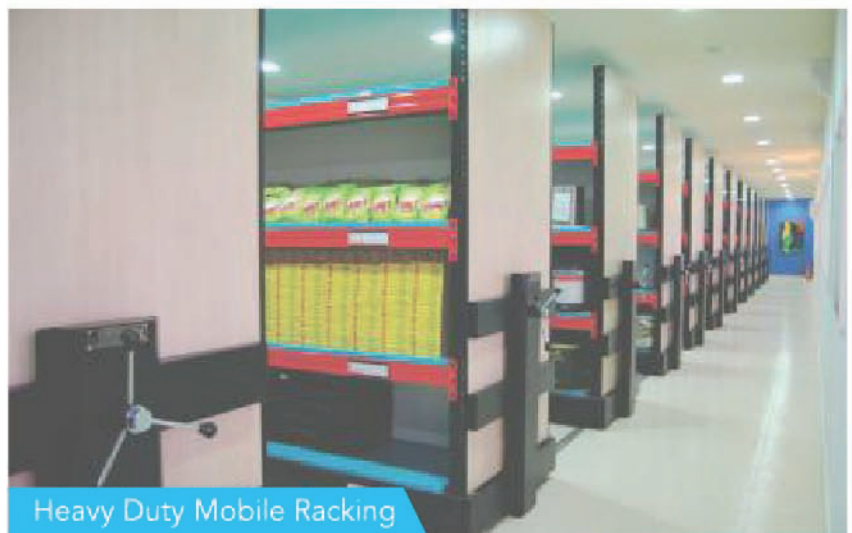
Pallet Racking



AS / RS & Mini - Load Systems



Cantilever Racking



Heavy Duty Mobile Racking



## FIRE RATED ROLLING SHUTTER



UL CERTIFIED 3 HRS FIRE RATED  
STEEL ROLLING SHUTTER



GI CONTINUOUS  
PROFILE ROLLING SHUTTER



ALUMINIUM INSULATED  
ROLLING SHUTTER



GI ROLLING SHUTTER



PERFORATED GI ROLLING SHUTTER



ALUMINIUM ROLLING SHUTTER



GALVANIZED STEEL  
INSULATED ROLLING SHUTTER



GRILL TYPE ROLLING SHUTTER



LATERAL POLYCARBONATE  
ROLLING SHUTTER



**CLIENTS**



## WHY ARC FIRE SAFETY & CONTROLS LTD ?

- ✓ Integrity & Quality
- ✓ Innovation & Performance
- ✓ Clients Priority
- ✓ Community & Teamwork
- ✓ 24 X 7 Sales After Service

📍 Jashimuddin Avenue, House #32  
Road #01, Sector #03  
Uttara, Dhaka-1230

☎ +02-48957001

✉ info@cesltd-bd.com

🌐 www.cesltd-bd.com